

## Pointless Personal Pollutants



- ◆ Nutrients from fertilizers, septic tanks and animal wastes enter our waters causing excessive growth of algae and aquatic weeds.
- ◆ Heavy metals and pesticides can kill aquatic organisms and contaminate ground water.
- ◆ Sewage, garbage and litter reduce oxygen in the water to levels that can kill aquatic life.
- ◆ Sediments from soil erosion can clog fish gills and shellfish filtering systems by cutting off their oxygen supply.
- ◆ Bacteria from septic tanks and animal wastes contaminate shellfish and lead to the closing of swimming areas.

BE PART OF THE SOLUTION,  
Contact the following  
for more information!

FLORIDA DEPARTMENT OF  
ENVIRONMENTAL PROTECTION  
Stormwater/Nonpoint Source  
Management Section  
2600 Blair Stone Road  
Tallahassee, FL 32399-2400  
Phone: (850) 245-7508

MIDWEST RESEARCH INSTITUTE  
FLORIDA DIVISION EDUCATIONAL  
PROGRAMS  
1470 Treeland Blvd., SE  
Palm Bay, FL 32909  
Phone: (321) 723-4547

For local information, contact:

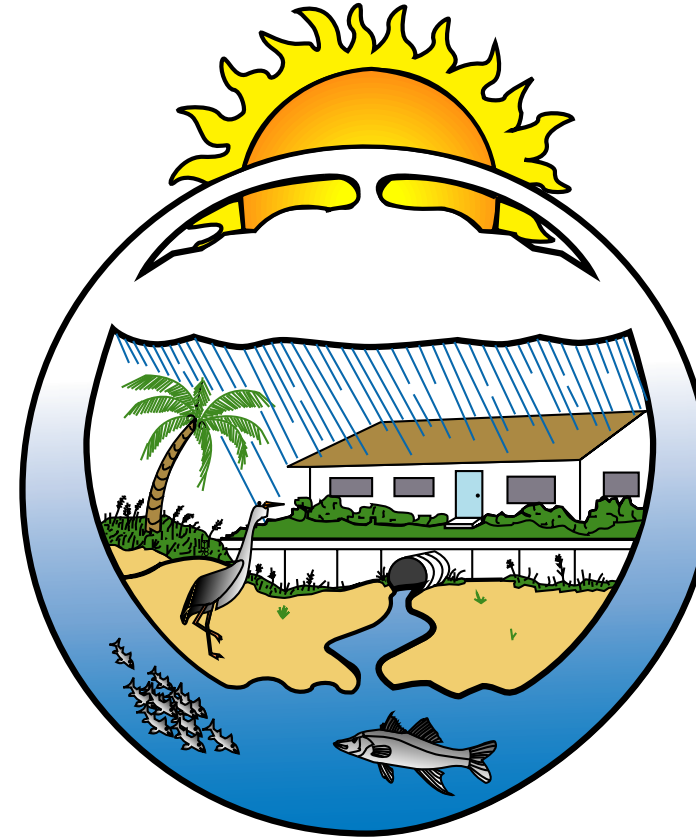
LOCAL SOIL & WATER  
CONSERVATION DISTRICTS

CITY & COUNTY GOVERNMENTS

COOPERATIVE EXTENSION SERVICE

LOCAL COMMUNITY COLLEGES

## PROTECT Florida's Water



# STOP!

## POINTLESS PERSONAL POLLUTION

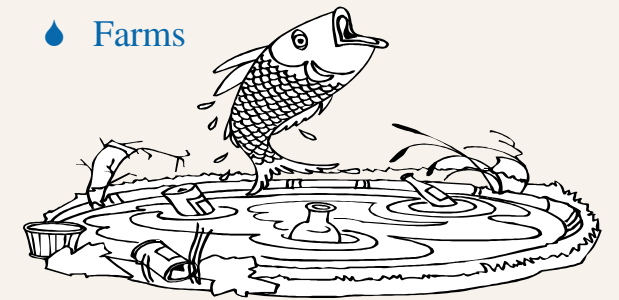
Did you know that  
wherever you live,  
your daily activities  
could end up polluting  
Florida's water?

Pollution washed into waterbodies by  
rain or irrigation water is known as

POINTLESS PERSONAL POLLUTION.

Major contributors to the pollution of  
surface and ground waters:

- ◆ Homes
- ◆ Businesses
- ◆ Farms



The good news is....  
WE cause this pollution  
and WE can stop it!

# What is *POINTLESS PERSONAL POLLUTION* ?

The cause of water pollution is often blamed on "point sources," such as industrial or sewage treatment facilities. Discharges from these sources flow through pipes and into our waterbodies. This pollution source can be readily identified and treated.

***Pointless Personal Pollution is the result of common daily activities.***

Pollutants you encounter everyday can travel by many different routes and enter our ground and surface waters.

## **Some examples of pollutants include:**

- ◆ Sand and dirt from erosion
- ◆ Oil and grease from automobiles
- ◆ Pesticides, fertilizers and weed killers
- ◆ Litter, yard clippings, pet and livestock wastes
- ◆ Bacteria & excessive nutrients leaking from septic tanks and animal wastes

## What YOU Can DO...

### at your house



**SHOP WISELY.** Buy products labeled biodegradable, non-toxic, non-phosphorus, or water soluble. **WHY?** They readily decompose and will not pollute surface or ground water.

**STORE PRODUCTS SAFELY.** Keep toxic products in original containers, closed and clearly marked in safe storage places. **WHY?** They are often the source of spillage or accidents.



**PROPERLY MAINTAIN SEPTIC SYSTEM.** Inspect system every 3 to 5 years depending on the number of people and the type of use. Pump out system as needed. Avoid acidic cleaners, chemicals or solvents. **WHY?** Acidic substances might destroy waste reducing bacteria needed for an effective septic system.

### on your lawn & garden



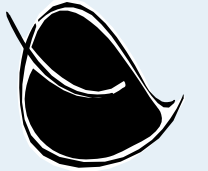
**USE GARDEN AND LAWN CHEMICALS WISELY.** Follow package directions carefully and do not apply if rain is in the forecast. **WHY?** Excessive fertilizers and chemicals wash off the property and into surface and ground waters.

**KEEP IRRIGATION WATER ON THE LAWN & GARDEN (NOT ON PAVED SURFACES).** Divert rain spouts onto unpaved areas or swales and wash vehicles on vegetated areas.

**WHY?** This allows runoff to soak into the soil and not wash over paved surfaces into nearby waterbodies.

**COMPOST LEAVES, GRASS AND SHRUB CLIPPINGS.** Use as mulch for fertilizer and do not rake into roadways.

**WHY?** These materials will decompose and return nutrients to the soil and avoid the necessity of applying fertilizers.



### with your vehicle



**SERVICE YOUR VEHICLE REGULARLY.** Have your vehicle inspected and maintained regularly.

**WHY?** This prevents leakage of motor oil, antifreeze and other fluids which can end up in the nearest waterbody.

**DON'T DRAIN USED MOTOR OIL INTO STORM DRAINS.** Take used motor oil and antifreeze to service stations to recycle them.

**WHY?** These products are toxic and add pollutants to surface waters if placed or washed into storm drains.